



★ secret ★

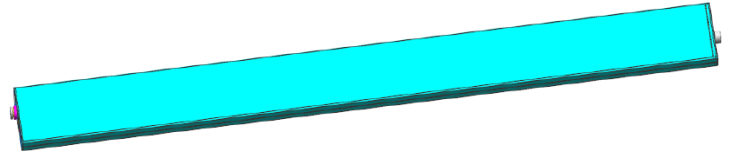
| | | | | | |
|------------|---|----------|---|---------------------------|-----------|
| file name: | C102F-PACK Capacity 138Ah battery product specification | | | project number (optional) | BYD C102F |
| File No: | | Version: | 1 | Page code: | 1 / 3 |

C102F-PACK Capacity 138Ah battery product specification

- Model: C102F

- C102F battery characteristics

- Using lithium iron phosphate as the cathode material
- Has excellent safety characteristics and long cycle life
- Good temperature performance, battery operating temperature range is wide
- High energy density, environment friendly



- battery certification

- GBT31484-2015
- GBT31485-2015
- GBT31486-2015

| Basic parameters of the battery | |
|--------------------------------------|---------------------------------|
| Q | 3.20V |
| monomerAllowquantity(1/3Cmin) | 138Ah |
| Rated energy | 441.6wh |
| Standard charging method | Constant current charging (CC) |
| Standard charging current | 27A @ 23°C |
| Maximum continuous charging current | 270A @ 23°C |
| Charge cut-off voltage | 3.80V/Cell |
| discharge method | constant current discharge (CC) |
| Discharge cut-off voltage | 2.00V/Cell |
| Standard discharge current | 27A @ 23°C |
| Maximum Continuous Discharge Current | 270A @ 23°C |
| Maximum charging power | 1000W(BOL/23°C/50%SOC/10S) |
| Maximum discharge power | 2000W(BOL/23°C /50%SOC/10S) |
| Shipping state voltage | 3.25V~3.35V |
| Shipping statusSOC | 30%~60% |
| DCIR@50 %SOC | 30s,1.5C,1.2±0.2mΩ |

| Basic battery size & weight | |
|-----------------------------|--------------|
| length | 960±0.7mm |
| width | 90±0.5mm |
| thickness | 13.5±0.5mm |
| weight | 2.65±0.05 kg |

| abuse test (GB31485) | Test results (based on:EUCAR) |
|----------------------|-------------------------------|
| extrusion | ≤L4 |
| overcharge | ≤L4 |
| Overdischarge | ≤L2 |
| short circuit | ≤L4 |
| Furnace heat | ≤L4 |



★ secret ★

| | | | | | |
|------------|---|----------|---|---------------------------|--------------|
| file name: | C102F-PACK Capacity 138Ah battery product specification | | | project number (optional) | BYD C102F |
| File No: | | Version: | 1 | Page code: | twenty three |

- battery safety

- Battery Operation & Storage

| | |
|--|--------------------------------|
| Charging ambient temperature | 0~+50°C |
| Discharge ambient temperature | - 20~+55°C |
| Short-term storage ambient temperature | - 20~+30°C(<3month,20~60% SOC) |
| Long-term storage ambient temperature | - 20 ~+30°C(<1Year,30~60% SOC) |
| storage humidity | 5%~95% |
| altitude | ≤4000m |

- Battery Protection & Monitoring

In order to ensure battery life and safe use, the charger and protection circuit must monitor the battery during charging and discharging:

| No. | project | condition |
|-----|---|------------------------------------|
| 1 | Charge cut-off voltage | 3.80 V/Cell |
| 2 | Discharge cut-off voltage | 2.00 V/Cell |
| 3 | Level 1 overcharge protection voltage | 3.81V~3.90V/Cell |
| 4 | Secondary overcharge protection voltage | 3.91V~4.00V/Cell(suggested value) |
| 5 | Overcharge recovery voltage | 3.50V~3.60V/Cell |
| 6 | Level 1 over-discharge protection voltage | 1.90V~1.99V/Cell |
| 7 | Secondary over-discharge protection voltage | 1.80V~1.89V/Cell(suggested value) |
| 8 | Over-discharge recovery voltage | 2.50V~2.80V/Cell |
| 9 | overheating alarm | 56°C |
| 10 | Overheating protection | 60°C |

-safety warning

- 1, Do not throw the battery into fire or otherwise heat the battery
- 2, Do not short circuit or install with incorrect polarity to avoid mechanical or electrical abuse
- 3, Do not mix batteries from different manufacturers or models
- 4, Do not disassemble or change the external structure of the battery, do not hit or puncture the battery with external force
- 5, Do not put the battery into water, sea water, strong acid, strong alkali and other substances
- 6, Avoid direct sunlight, avoid high temperature and high humidity (temperature≤65°C, humidity≤95%)
- 7, When operating the battery, you need to wear rubber or rubber gloves
- 8, When charging and discharging the battery, ensure that the battery has voltage, current, temperature monitoring and protection
- 9, When the battery leaks, smokes or is damaged, stop using it immediately and contact our company to deal with it



★ secret ★

| | | | | |
|-------------------|---|-----------------|---------------------------|-------------------------|
| file name: | C102F-PACK Capacity 138Ah battery product specification | | project number (optional) | BYD C102F |
| File No: | | Version: | 1 | Page code: 3 / 3 |



Shenzhen BYD Lithium Battery Co., Ltd.

Address: No. 5, Xiusha Road, Pingshan New District, Shenzhen (Phase II of BYD Kengzi)